

September 10-13, 2019
Royal Belgian Institute of Natural
Sciences, Brussels, Belgium



International symposium

Evolution and Paleoenvironment of Early Modern Vertebrates during the Paleogene

Second Circular



PALEURAFRICA MEETING 2019

As part of the PalEurAfrica network research project (www.paleurafrica.be), we are happy to invite you to the Royal Belgian Institute of Natural Sciences (RBINS) for an international symposium on the evolution and paleoenvironment of early modern vertebrates. This symposium will gather specialists who work on macro- and micropaleontology, bio- and isotope stratigraphy, paleoenvironment, paleogeography, and geology of Paleogene vertebrate bearing sites.

This international meeting will also celebrate the memory of one of our PalEurAfrica partners, Gregg Gunnell (1954 - 2017), who died tragically and unexpectedly in the middle of his career, having made significant contributions to our understanding of Paleogene vertebrate evolutionary history.



HOST COMMITTEE

Thierry Smith (Chair) – Royal Belgian Institute of Natural Sciences, Brussels, Belgium

Thierry De Putter – Royal Museum for Central Africa, Tervuren, Belgium

Stephen Louwye – Universiteit Gent, Gent, Belgium

Johan Yans – Université de Namur, Namur, Belgium

Matthew Borths – Duke University Lemur Center, Durham, NC, USA

Nancy Stevens – Ohio University, Athens, OH, USA

SCIENTIFIC COMMITTEE

Massimo Delfino – Università di Torino, Torino, Italy

Gilles Escarguel – Université de Lyon, Lyon, France

Annelise Folie – Royal Belgian Institute of Natural Sciences, Brussels, Belgium

Emmanuel Gheerbrant – Museum national d'Histoire Naturelle, Paris, France

Jason Head – University of Cambridge, Cambridge, UK

Gerald Mayr – Senckenberg Forschungsinstitut und Naturmuseum, Frankfurt, Germany

Florias Mees – Royal Museum for Central Africa, Tervuren, Belgium

Ellen R. Miller – Wake Forest University, Winston-Salem, NC, USA

Adán Pérez-García – Universidad Nacional de Educación a Distancia, Madrid, Spain

Rajendra Singh Rana – H.N.B. Garhwal University, Srínagar, Uttarakhand, India

Hesham M. Sallam – Mansoura University, Mansoura, Egypt

Floréal Solé – Royal Belgian Institute of Natural Sciences, Brussels, Belgium

Robert Speijer – Universiteit Leuven, Leuven, Belgium

Rodolphe Tabuce – Université de Montpellier, Montpellier, France

PROGRAM



WELCOME TO THE RBINS – BRUSSELS

The meeting will take place in the conference rooms of the Royal Belgian Institute of Natural Sciences, located in the center of the city of Brussels next to the European parliament.

(www.naturalsciences.be)



SCIENTIFIC PROGRAM

As we are united by a common scientific interest - Paleogene vertebrates and their environments - talks shall be presented unopposed in a single venue, the main auditorium (150 seats) of the RBINS.

Theme 1: Paleogene vertebrate morphology

Topic 1. Systematics and Phylogenetics

Topic 2. Functional anatomy and Ecomorphology

Theme 2: Stratigraphy

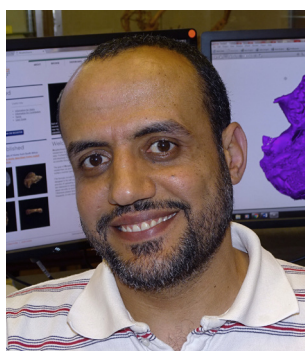
Topic 3. Biostratigraphy: mammals, palynomorphs, foraminiferans, nannofossils, charophytes...

Topic 4. Isotope stratigraphy

Theme 3: Paleoenvironment and Paleobiogeography

Topic 5. Abiotic variables in vertebrate evolution: Geology, Tectonics and Climate

Topic 6. Biotic variables in vertebrate evolution: Floral change, Faunal change, and Dispersal



KEYNOTE LECTURES

At least three invited conferences will be scheduled for plenary sessions. Prof. Dr. Hesham M. Sallam from Mansoura University Vertebrate Paleontology Center is scheduled for a conference on recent results from research into the Paleogene vertebrate faunas of the Fayum depression, Egypt.

INSTRUCTION FOR ABSTRACT SUBMISSION

The template for your abstract is available on the website www.paleurafrica.be. Your abstracts must be sent before the submission deadline as an Email attachment to paleurafrica2019@naturalsciences.be, together with your registration form.

PRESENTATIONS

All of the accepted abstracts will be compiled and edited in pdf format. The electronic version of these abstracts and the final program will be available on the PalEurAfrica website. Oral and poster presentations will be scheduled in the final program. Oral presentations will be of 15 min or 20 min depending of the number of participants.

REGISTRATION FEES

The registration fees are expressly low to encourage participation in the congress, particularly for young scientists who wish to integrate into the community of Paleogene paleontologists and geologists. Registration fees cover costs of the abstract volume, ice breaker party, coffee breaks, and guided tours.

STUDENT:

30 EUR (on or before July 31 2019),
40 EUR (on or before August 31 2019)

REGULAR:

50 EUR (on or before July 31 2019),
70 EUR (on or before August 31 2019)

Payment via bank transfer to the RBINS account (preferred) or in cash at the meeting.

Bank: Bpost

Name: IRSNB

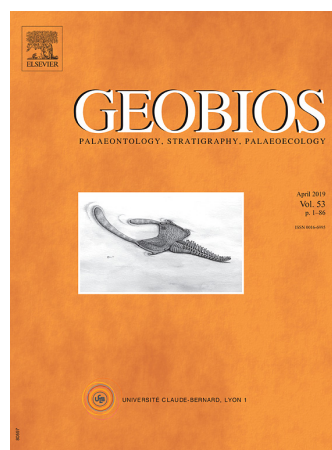
IBAN: BE09 6792 0058 2357

BIC/SWIFT: PCHQBEBB

Communication/Message: Your name + Paleurafrica2019.

PUBLICATION OF A THEMATIC VOLUME IN *GEOBIOS*

The Chief Editor of the international journal Geobios, Dr. Gilles Escarguel, offered us the opportunity to publish papers dedicated to the general theme of the PalEurAfrica congress in a thematic volume (i.e., part of the regular series of the journal). There are no fees if the rules are respected. Eight to twelve papers are needed to edit the volume. The submission deadline is set at December 31, 2019. After a complete review the volume is estimated for printing Autumn 2020. Authors instructions are available on: www.journals.elsevier.com/geobios



SOCIAL PROGRAM

An icebreaker party will take place on the evening of September 10th 2019 in the Royal Belgian Institute of Natural Sciences.

A Congress Dinner will be organized, for which the price should be limited to 35 EUR.

A guided tour of the RBINS exhibitions will be organized during the meeting.



A second visit of exhibitions will be organized at the renovated Royal Museum for Central Africa (Tervuren), which is only at 14 km from RBINS.



FIELD TRIP

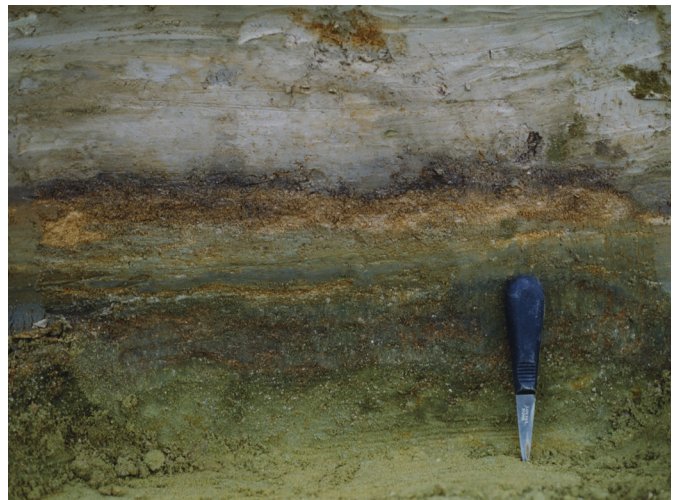
Ninety five percent of the persons who returned the completed pre-registration form marked their intention to attend the field trip. Therefore, after requesting permission for access, we are happy to announce that we will visit the vertebrate localities of Maret (middle Paleocene, MP1-5), Dormaal (earliest Eocene, MP7), and Hoogbutsel-Boutersem (early Oligocene, MP21) in eastern Belgium.



Outcrop section at Boutersem-TGV in the early Oligocene Boutersem Sand Member of the Borgloon Formation (MP-21).



Outcrop section at Maret with the marls of Gelinden sandwiched between the middle Paleocene Heers Formation (MP1-5) and the late Paleocene Hannut Formation.



The sunken path of Dormaal along which the fluvial deposits of the earliest Eocene Tienen Formation are exposed (MP7).

COLLECTIONS

Of the 38 millions specimens housed at RBINS (<http://collections.naturalsciences.be>) three millions are in the paleontology division. Among these are famous Paleogene collections, such as the mammals of Hainin and Dormaal (European MP reference levels), the Thanetian champsosaurs of Erquelinnes, the Ypresian crocodiles, turtles, and birds, Casier's Lutetian sharks, and Leriche's Rupelian fishes. For access to collections, please contact Annelise Folie (annelise.folie@naturalsciences.be), curator of paleontology collections.



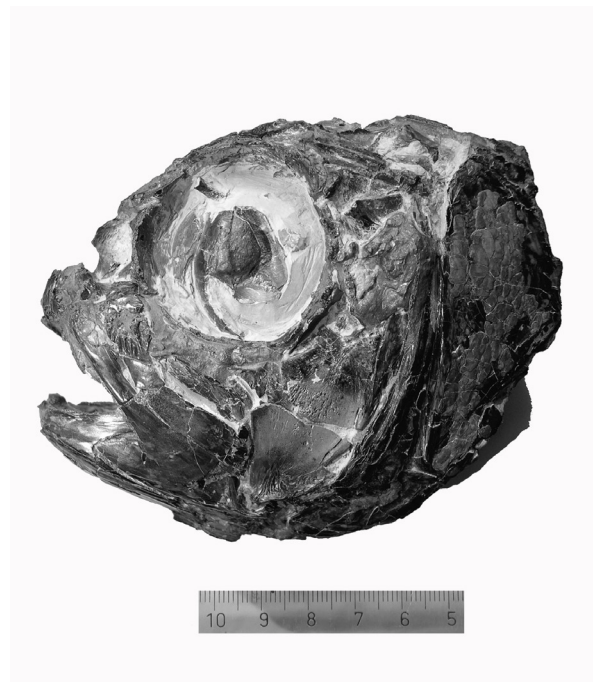
Leaf imprint of *Quercus loozi* Saporta and Marion, 1877 from the middle Paleocene (Selandian) Heers Formation of Gelinden.



Skeleton of *Champsosaurus dolloi* Sigogneau-Russell, 1979 from the latest Paleocene (Thanetian) of Erquelinnes.



Lectotype dentary of primate *Teilhardina belgica* (Teilhard de Chardin, 1927) from the earliest Eocene (Ypresian) of Dormaal.



Skull of carangid fish *Belgocaranx luybaertsi* Taverne et al, 2006 from the early Oligocene (Rupelian) of the Boom Clay

HOTEL AND ACCOMMODATION

Hotel reservations shall be arranged by the participants by contacting and booking directly. Brussels has many possibilities for accommodation, including hotels of different categories, youth hostels, and campsites.

A list of convenient hotels and their locations around the city center will be available on the PalEurAfrica website (www.naturalsciences.be).

IMPORTANT DATES

- | | |
|------------------------------|---|
| June 15, 2019 | Deadline for abstract submission |
| June 30, 2019 | Evaluation of abstracts and e-mail of acceptance |
| July 31, 2019 | Deadline for early registration |
| August 31, 2019 | Deadline for late registration, Final program (3 rd circular) including abstracts available on website |
| August 30, 2019 | Deadline for late registration, Final program (3 rd circular), abstracts available on website |
| September 10-13, 2019 | PalEurAfrica meeting |
| Tuesday Sept. 10: | Registration, Technical session, Guided tour RBINS, Icebreaker party |
| Wednesday Sept. 11: | Technical session, Visit RMCA |
| Thursday Sept. 12: | Technical session, Guided tour RBINS (additional?), Conference dinner |
| Friday Sept. 13: | Fieldtrip in eastern Belgium |